

VB-SemiAir

Volkswagen Amarok

Hulpluchtvering voor de achteras
Zusatzluftfederung für die Hinterachse
Auxiliary air spring for the rear axle
Suspension auxiliaire à l'arrière



1550917100
Montage handleiding
Montageanleitung
Fitting Instructions
Instructions de montage



© 2010, VB-Airsuspension B.V.

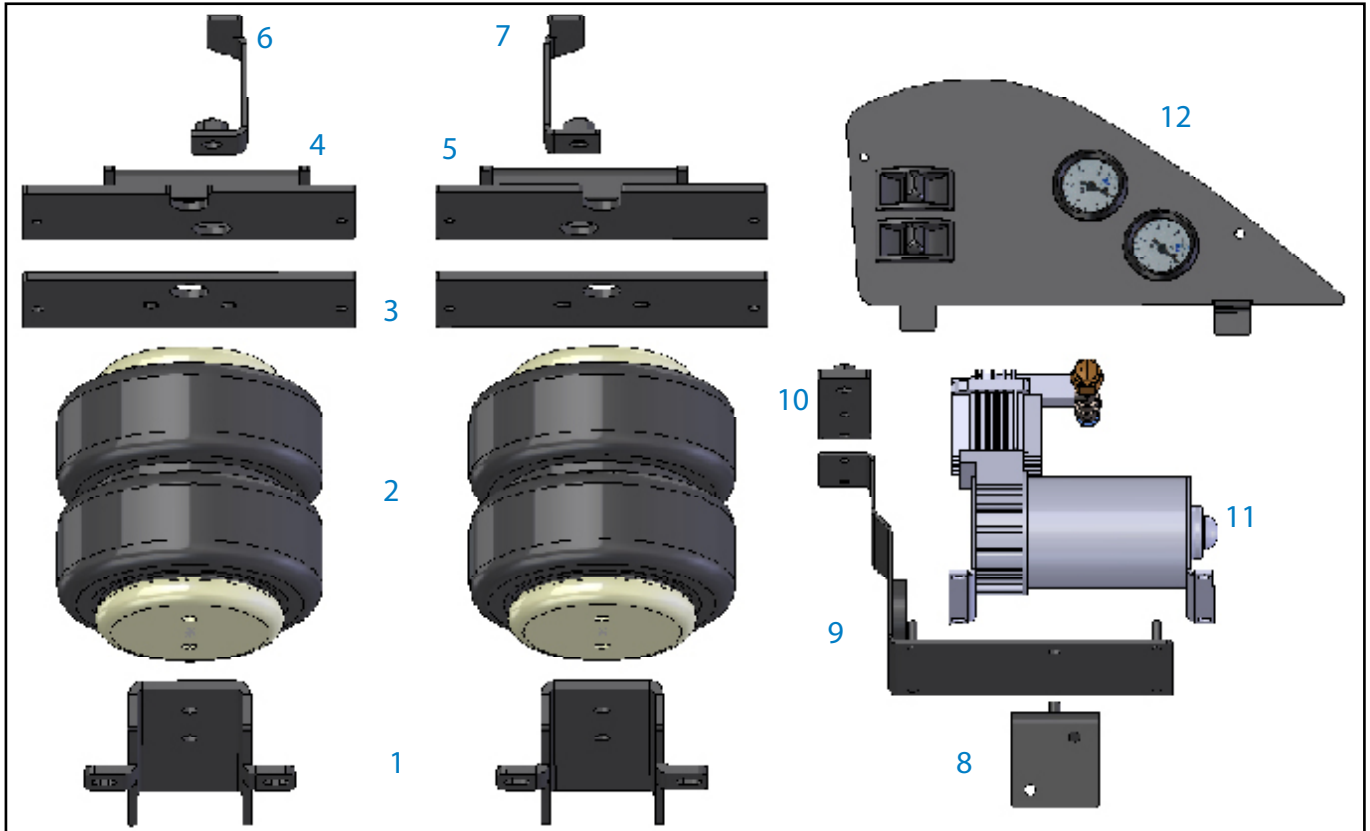
Alle rechten voorbehouden. Niets uit deze uitgaven mag worden verveelvoudigd en/of openbaar gemaakt door middel van druk, fotokopie, microfilm of op welke andere wijze dan ook, zonder voorafgaande schriftelijke toestemming van VB-Airsuspension B.V. Dit geldt ook voor de bijbehorende tekeningen en schema's.

Alle Rechte vorbehalten. Vervielfältigung und/oder Veröffentlichung durch Nachdruck, Fotokopie, Mikrofilm oder auf jede andere Art – auch auszugsweise – ohne vorherige schriftliche Genehmigung von VB-Airsuspension ist nicht zulässig. Dies gilt auch für die zugehörigen Zeichnungen und Pläne.

All rights reserved. No part of this publication may be reproduced, stored in a retrieval system, or transmitted in any form or by any means, electronic, mechanical, photocopying, recording or otherwise, without the publisher's prior consent. That does also count for the schemes and drawings.

Reproduction interdite. Toute reproduction, tout enregistrement dans une base de données ou toute transmission sous toute forme ou par tout moyen : électronique, mécanique, photocopie, enregistrement ou autre, de tout ou partie de cette publication, est formellement interdit(e) sans l'autorisation préalable de VB-Airsuspension B.V. Ceci est aussi valable pour les dessins et les schémas.

1. Overview of the air-suspension kit

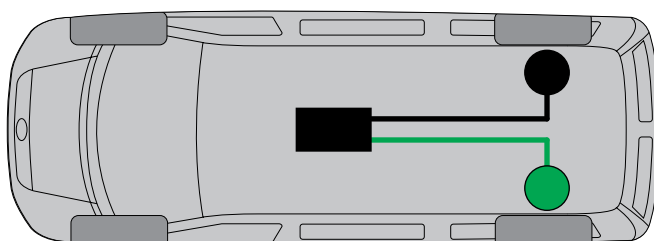


The air-suspension kit consists of numerous different parts. To keep things clear, only the main parts have been included on the above picture. The more common parts, like for example the fitting materials, have been left out.

Nr.	Omschrijving
1	Lower springplate (2x) (1552050017)
2	Air-spring (2x) (1052030167)
3	Upper springplate (2x) (1552040018)
4	Set plate (L) (1552040014)
5	Set plate (R) (1552040015)
6	Mounting nut (L) (1552040016)

Nr.	Omschrijving
7	Mounting nut (R) (1552040017)
8	Compressor bracket add 2 (1555370515)
9	Compressor bracket (1555370508)
10	Compressor bracket add 1 (1555370514)
11	Compressor (1052111034)
12	Controlpanel (1555370105)

Some parts are different for left or right. To see the differences and to be sure to fit the parts on the correct position, these parts are marked with colours.



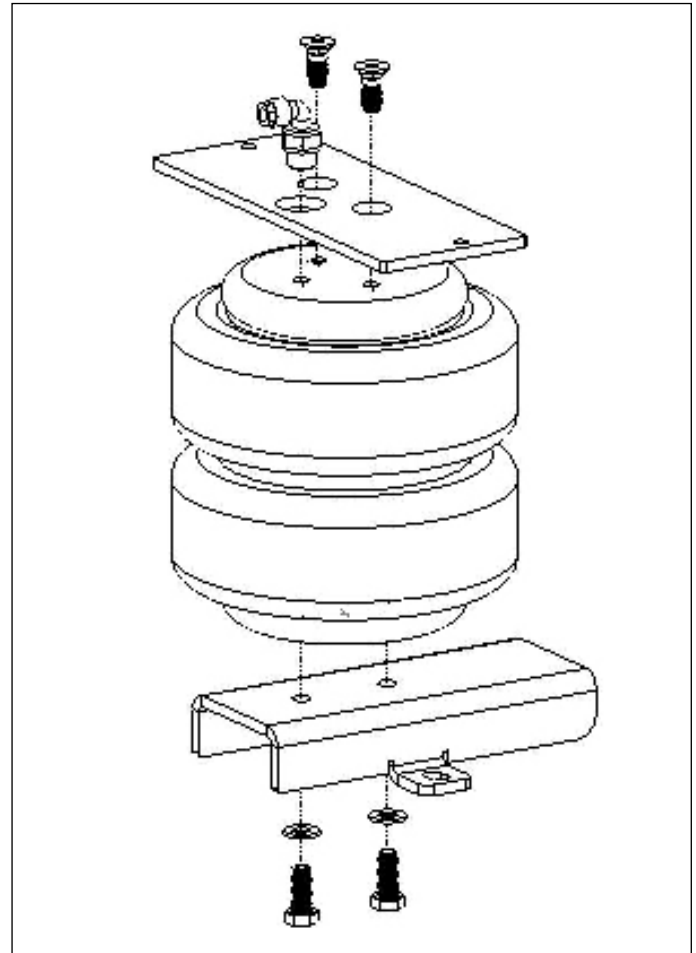
Kleur	Beschrijving
●	Rear left
●	Rear right

2 Assembly

2.1 Assembly air-spring

1. Assemble the air-spring as shown in the picture.

- 2x Air-coupling Ø6
- 4x M8x20 Countersunk Allan Screw
- 4x M8 Washer
- 4x M8x20 Hexagonal bolt



2.2 Mounting air-spring

1. Support the vehicle and the axle properly.
2. Remove the bump stop.



3. Insert the mounting nut through the hole in the chassis.



Note that the nut is in line with the hole on the underside of the chassis.



4. Put the set plate in place with a M10 button-head bolt.

2x *M10x25 Allan screw*

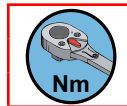


43 Nm



5. Mount the air-spring, with the spring plate on the set plate.

4x *M6x10 Allan screw*



13 Nm



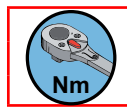
Note that the sides of the upper spring-plate are in line with the sides of the set plate.

6. Mount the lower spring plate on the axle.

2x *U-bolt (round) M8*

4x *M8 washer*

4x *M8 nut*



8 Nm



3. Compressor

3.1 Assembly compressor

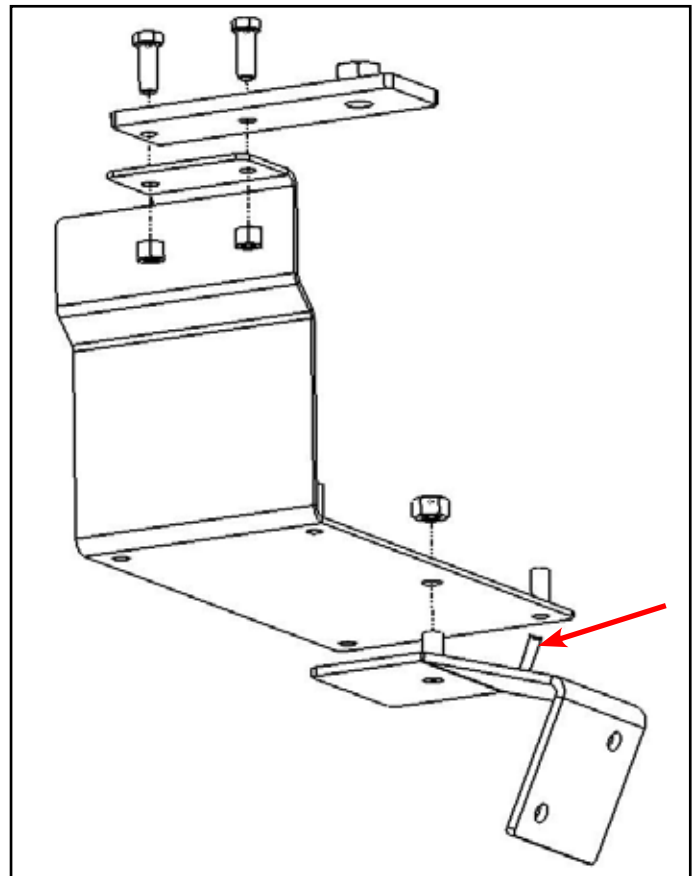
1. Assemble the compressor as shown in the picture.

- 1x M6 nut
- 2x M5 nut
- 2x M5x16
- 4x M5 washer
- 1x M6 washer



2. Mount the relay on the indicated spot.

- 1x M5 nut
- 1x M5 washer



3.2 Mounting compressor

1. Remove the side panel from the dashboard at the driver's side.
2. Remove the left dashboard panel.
3. Remove the panel under the steering wheel.



4. Place the compressor under the steering wheel.



5. Mount the left side of the compressor.

- 1x M8x20
- 1x M8 sluitring



21 Nm



6. Mount the right side of the compressor.

- 2x M6x16
- 2x M6 sheet-metal washer
- 2x M6 locking nut
- 2x M6 sluitring



9 Nm



4. Controlpanel

1. Mount the controlpanel on the side of the dashboard.
2. Connect the air-tubes to the manometer.



4.1 Wiring harness

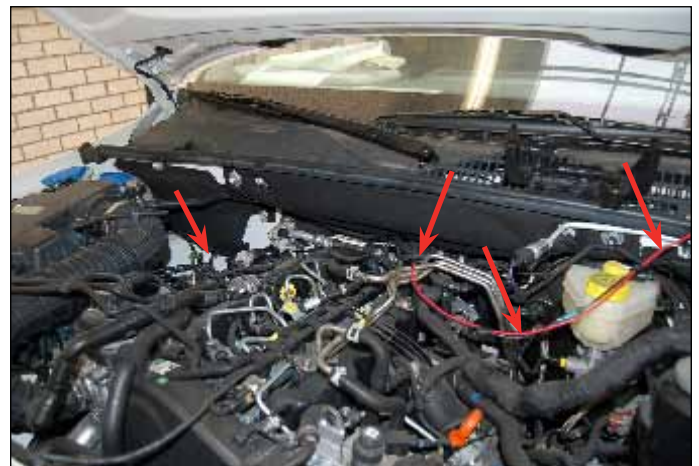
1. Connect the wiring harness as shown in the picture.
 - Red-black to red-black.
 - White-yellow to white-blue.



2. Lead the wiring harness, through the passenger side, under the dashboard (arrow), into the engine compartment. (circle)



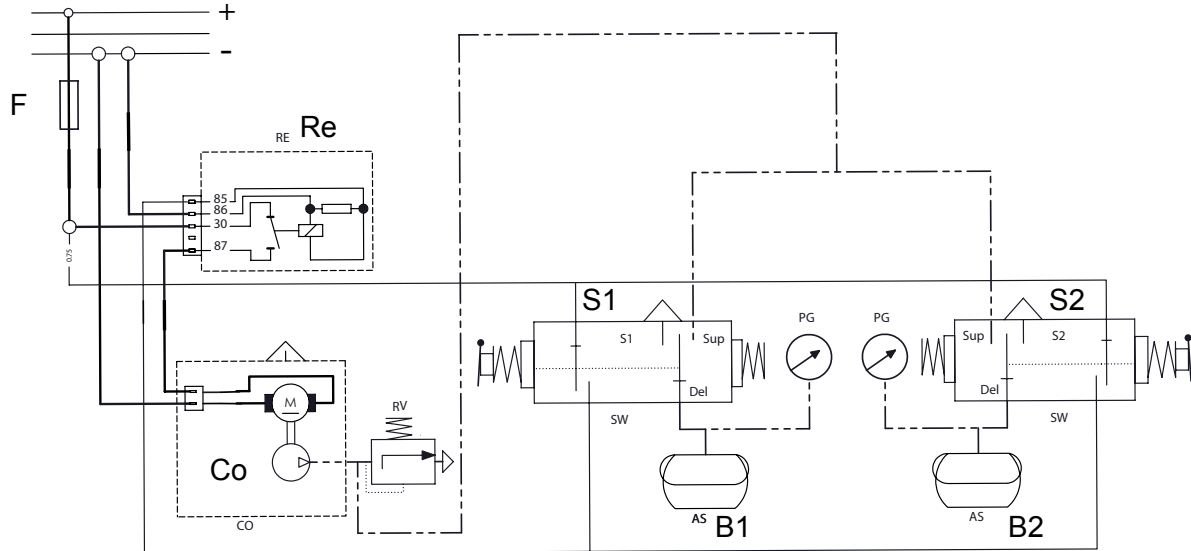
3. Lead the cable, behind the engine, to the battery.



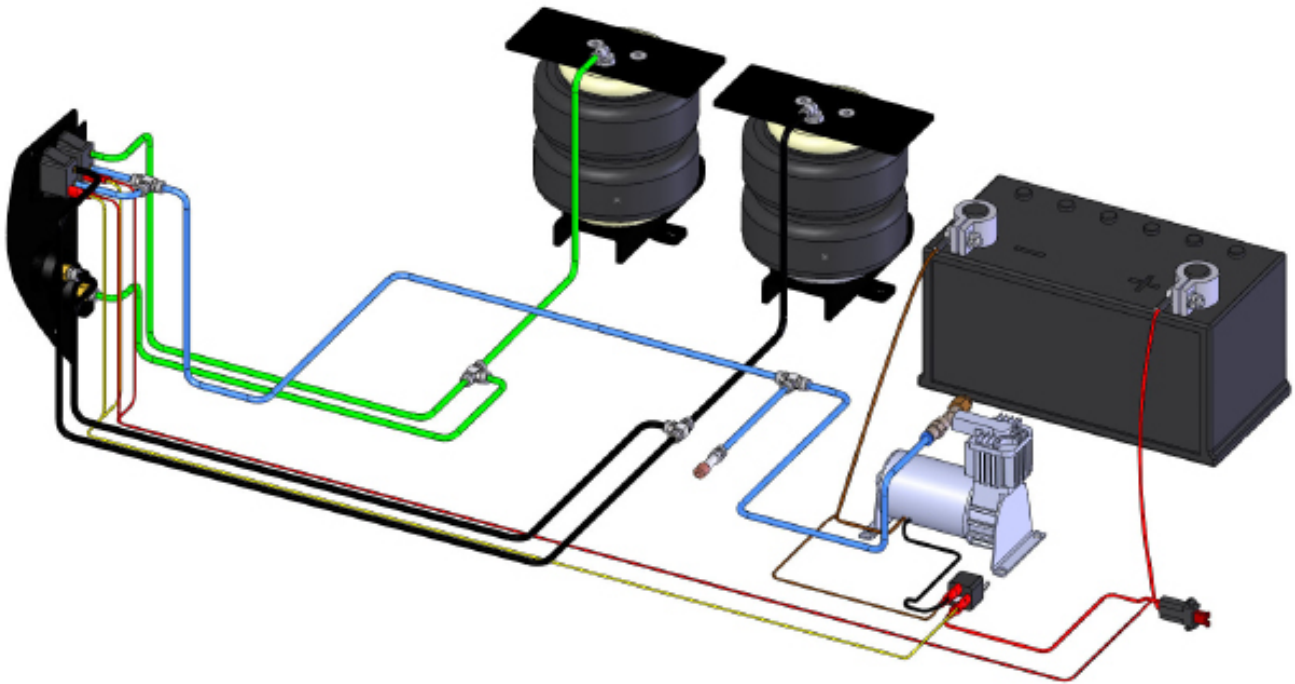
4. Connect the wiring harness to the battery.



4.2 Air-tubes



B1	Airspring left
B2	Airspring right
S1	Switch dashboard left
S2	Switch dashboard right
Co	Compressor
Re	Compressor relay
F	Fuse 25A



1. Connect the **green** air-tube to the **left** air-spring.
2. Connect the **black** air-tube to the **right** air-spring.
3. Connect the tubes as shown in the diagram and the picture.
4. Store the tubes under the vehicle. Fasten these onto the chassis with tie-wraps.



Make sure that the air tubes aren't near hot or moving parts.



VB-Airsuspension B.V.
Postbus 130 7050 AC Varsseveld
Frankenweg 3 Varsseveld
The Netherlands
T: +31 (0)315 241075 F: +31 (0)315 244232
info@vbairsuspension.com

VB-Airsuspension France S.A.R.L.
73, rue Principale
67310 Traenheim
France
T: +33 (0) 689 062469 F: +33 (0) 388 044070
steinpatz@vbairsuspension.fr

VB-Airsuspension UK L.T.D.
Unit 13, Elder Court, Lions Drive
BB1 2EQ Blackburn, Lancashire
United Kingdom
T: +44(0)1254 848010 F: +44 (0)1200300110
drinkwater@vbairsuspension.co.uk

VB-Airsuspension Deutschland GmbH
Brinkerfeld 11
D-58256 Ennepetal
Deutschland
T: +49 (0)2333 985920 F: +49 (0)2333 985930
info@vbairsuspension.de

